



THE MODERN QUEENSLANDER

MEETS MP 4.1 SUSTAINABLE BUILDINGS (2010)

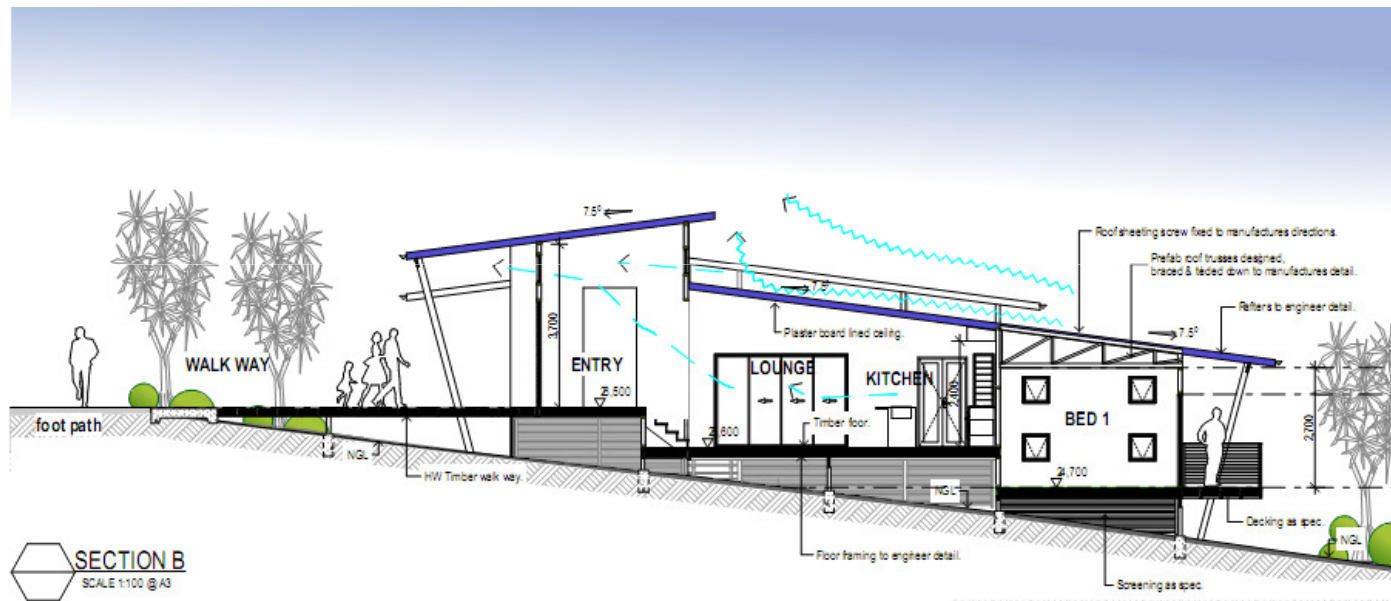
The modern Queenslander

USES GOOD PASSIVE DESIGN PRINCIPLES

- ▶ Good orientation
- ▶ Good air-flow paths
- ▶ Good solar access
- ▶ Good insulation and shading
- ▶ Good material selection



The modern Queenslander



The modern Queenslander

MAKES GOOD LIFESTYLE CHOICES

- ▶ Appropriate layout
- ▶ Good indoor/outdoor living options
- ▶ Custom design
- ▶ Good aesthetics
- ▶ Good material selection
- ▶ Sustainable living options



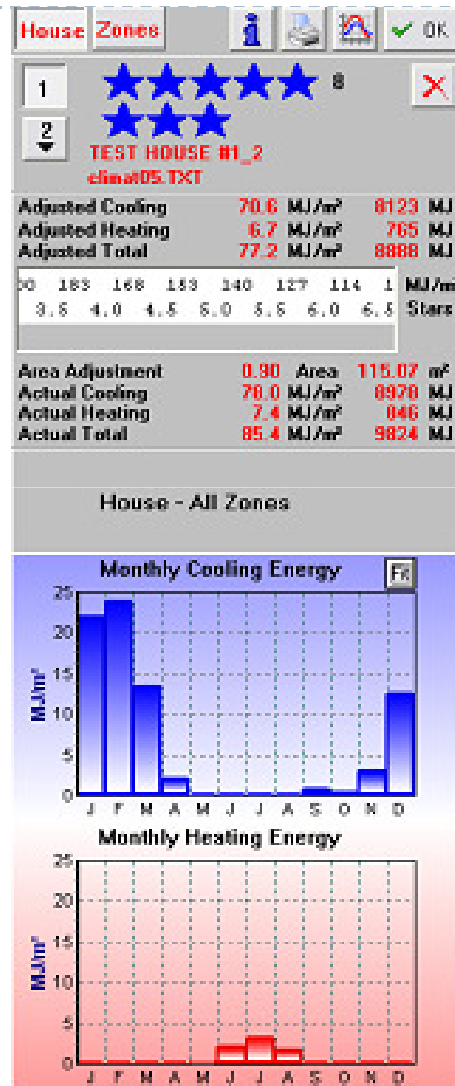
The modern Queenslander

Designed for minimum impact on the site

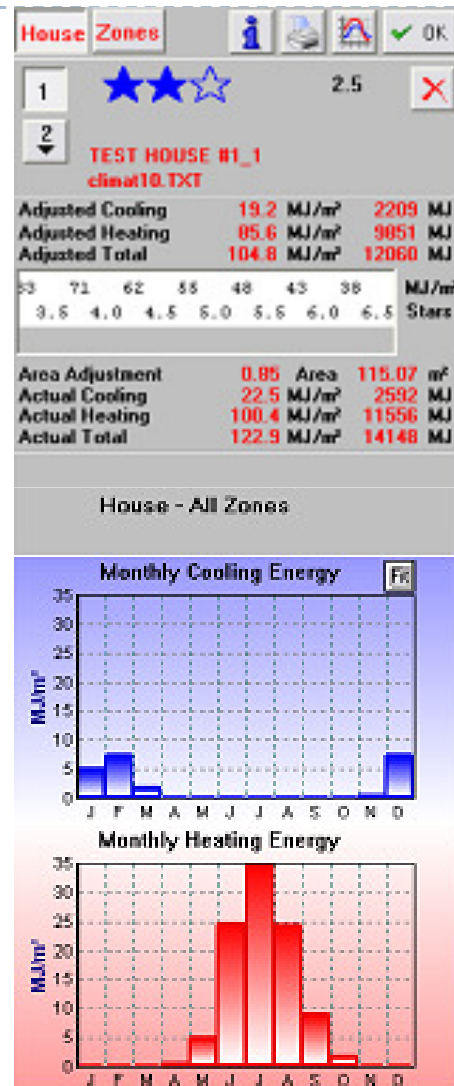


The modern Queenslander

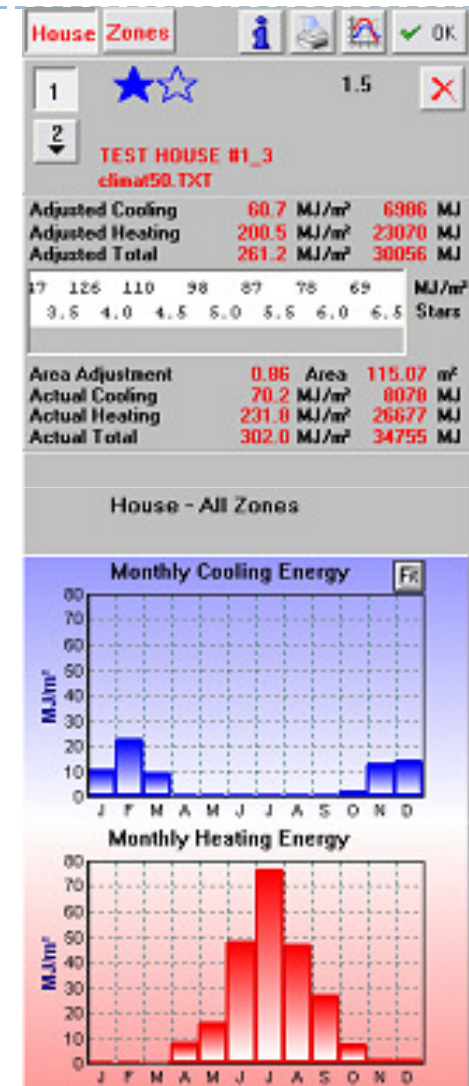
HOW DOES IT RATE?



TOWNSVILLE



SUNSHINE COAST



TOOWOOMBA

HOW DOES IT COMPLY?

▶ **TOWNSVILLE**

- ▶ Achieves 6 - 8 stars ✓

▶ **SUNSHINE COAST**

- ▶ Achieves 2.5 stars ✗

- ▶ Insulate floor & enclose under - Achieves 3.5 stars ✗

- ▶ Complies with BCA 2009 DtS plus outdoor living credit ✓

▶ **TOOWOOMBA**

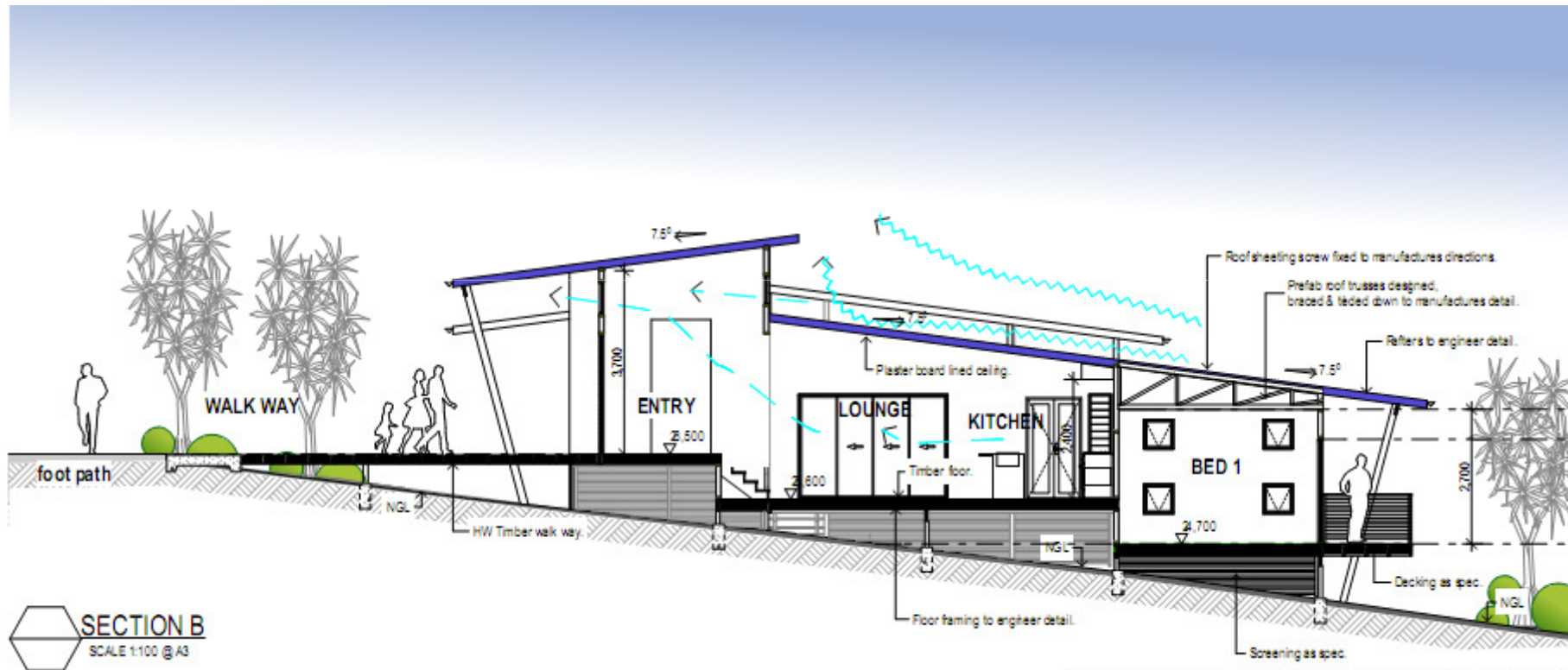
- ▶ Achieves 1.5 stars ✗

- ▶ Insulate floor & enclose under achieves 2.5 stars ✗

- ▶ As above plus upgrade insulation & glazing to 4.5 stars plus 1.5 stars credit ✓
-



The modern Queenslander



The modern Queenslander

